

PROGRAM DETAILS!

5:30-6:00 Social Hour
6:00-7:00 Presentation
Ms. Rose's Fine Food and
Cocktails
1090 Sam Rittenberg Blvd.
Charleston, SC 29407

1 AIA LU/HSW

Free for Members/Students;
\$15 for others

**FUTURE
MEETING TOPICS**

- Business Etiquette**
November 2017
- CSI Christmas Party @ Pour Taproom**
December 2017
- Biking with Charleston Moves Nonprofit**
January 2018
- FEMA / Flood**
February 2018
- AIA/CSI Oyster Roast**
March 2018
- Low Country Case & Millwork Tour**
March 2018
- CSI Products Fair & Seminar**
April 2018
- Documentation for Delivery Methods**
May 2018
- Volvo Plant Tour**
May 2018
- Founder's Roundtable & Reception**
June 2018
- Treat Historic Walls**
July 2018
- Low Battery Project**
August 2018

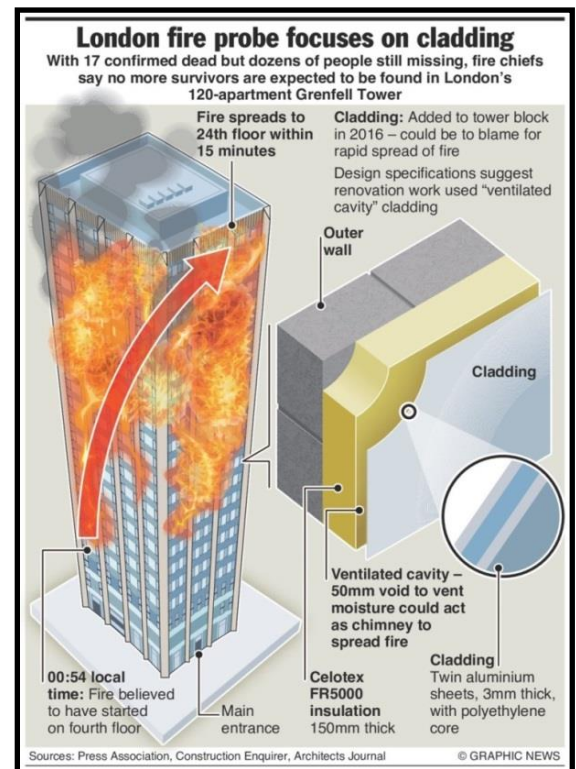
**GRENFELL TOWERS FIRE LONDON –
COULD IT HAPPEN HERE?**

On June 14, 2017, a fire erupted in Grenfell Tower Public Housing Complex in North Kensington, in West London (United Kingdom). It is believed the fire started from a faulty fridge-freezer on the 4th floor resulting in almost 80 deaths and over 70 injuries. A total of 151 flats were destroyed in the building itself along with other properties in the surrounding area.

This catastrophe is considered the worst structural fire in the United Kingdom since the beginning of the 20th Century.

A public Inquiry of the fire began this month with the first hearing on September 14, 2017 with further hearings scheduled in October.

The focus of the investigation is the exterior cladding of the building, as it is believed this material, commonly used in building construction today, caused the fire to accelerate to the upper floors within fifteen minutes, causing massive devastation and destruction throughout the housing complex.



The presenters will be Greg Soyka and Roy Selvidge; architects from LS3P Associates who have been studying the issues at Grenfell Tower.

Learning Objectives

- Participants will be able to describe the original construction and subsequent renovations of Grenfell Towers.
- Participants will be able to describe the sequence of events of the June 14 fire and the fire propagation properties of the cladding materials.
- Participants will be able to discuss the other deficiencies of the building, including fire stairs, hardware, sprinklers, alarms, and emergency procedures.
- Participants will be able to find and apply applicable Code requirements for high rise and renovation projects.
- Participants will be aware of responsibility of design professionals to protect the public in all delivery methods, including value engineering and substitutions.